

FAR WESTERN UNIVERSITY  
DURGALAXMI MULTIPLE CAMPUS

ATTARIYA, KAILALI, NEPAL

[ESTABLISHED: 2063 BS]

**TRACER STUDY REPORT 2023**



**Prepared By:**

**DURGALAXMI MULTIPLE CAMPUS**

ATTARIYA, KAILALI, NEPAL

3 February 2026

E-MAIL: [edudlmc@gmail.com](mailto:edudlmc@gmail.com)

Ph: 091-550861

Fax: 091550383

FAR WESTERN UNIVERSITY  
**DURGALAXMI MULTIPLE CAMPUS**  
ATTARIYA, KAILALI, NEPAL  
[ESTABLISHED: 2063 BS]

**TRACER STUDY REPORT 2023**

Prepared by:

- 1.Siddha Raj Bhatta
- 2.Sabitri Bhatta

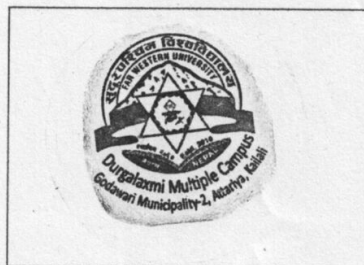
.....  
.....  
.....  
.....

Coordinator , Tracer Study Task Team  
Member, Tracer Study Task Team

Approved By:

.....  
Dr. Narendra Bahadur Air  
Campus Chief

Campus Seal



3 February 2026

## Acknowledgement

Durgalaxmi Multiple Campus could not have undertaken this tracer study without the continuing support of University Grants Commission Nepal and we would like to express our gratitude to graduates of 2023 of Durgalaxmi Multiple Campus, who provided us all the required information for the completion of this report. We would like to also thank Durgalaxmi Multiple Campus administration, faculty members and IQAC committee for their kind cooperation and valuable suggestions.



## **Executive Summary**

This report has been prepared as the **Tracer Study Report** of the graduates 2023 from Durgalaxmi Multiple Campus, Attariya Kailali. The students selected for the purpose were the graduates of 2023 and were from the stream of Management, Education and Humanities. The report has been divided into five chapters. The first chapter is introductory, which the second one deals with presentation and analyses the available data. The third chapter provides the major findings of the report and the fourth chapter provides guidelines for implication of findings to the institutional reform and the fifth one draws the conclusion and suggests some recommendations.

### **Objectives:**

Basically there are four objectives of conducting this study: to investigate employment status of the graduate of the campus 2023 batch, to find out students' pursuits of further study details, to find out the issues related to placement and prospect market of the graduates and to relate the views and experiences of the graduates.

### **Aim:**

The aim of writing this report was to find out the issues related to the quality and relevance of higher education. The study was also aimed to use the report for the formulation and amendments of its strategic plan as per the needs and expectation of market.

### **Procedures and interpretations**

To get the needed information, both quantitative and qualitative methods were employed for data collection and questionnaire for interviewing was piloted to make sure the right information could be collected. The notice for tracer study was shared sing the social media/ facebook. Those who couldn't come in contact were contacted through telephone and email. Required information was collected; individual forms were filled through face to face interview, telephonic conversation and via mail. All the selected information was compiled, analyzed and evaluated and final report was prepared.

### **Result and Implications**

From the above findings, a number of conclusion can be drawn about the employment opportunities from our graduates currently in the field and relevancy of the college programs, teaching learning environment, quality of delivery, teacher student relationship, extracurricular activities, library/lab facilities etc. following are the major conclusions which respond to the research objectives that were set out for this study.

This study report is the second effort to find out about the employability of graduates. It has provided both feedback and review on employability and college programs. It can be inferred that the graduates give high priority to seek jobs to do after graduation.. Further research is required to find out the employment opportunities for both genders. The graduates from the Faculty of



Education have more chances of getting employed than the graduates of other faculties. The analysis of employed shows that job holders are engaged in the field of study they pursued at bachelor level. The findings show that EDJs and Dalits are nominal at Masters Level and their employability is very low. The programs offered by the institution slightly address the current needs of the market. The graduates have the expectation that campus should help those finding jobs and start market oriented programs.



## LIST OF TABLES

Table No.	Topic	Page No.
1	Total graduates of the year 2023	4
2	Employment and further Status of the graduates	5
3	Quality and Relevance of Programmes of Humanities	6
4	Quality and Relevance of Programmes of Management	7
5	Quality and Relevance of Programmes of Education	7
6	Programs' Contribution of Graduate of Humanities	8
7	Programs' Contribution of Graduate of Management	9
8	Programs' Contribution of Graduate of Education	10
9	Issues Related to Teacher and Learning of Humanities	11
10	Issues Related to Teacher and Learning of Management	11
11	Issues Related to Teacher and Learning of Education	12
12	Issues Related to Facilities of Humanities	13
13	Issues Related to Facilities of Management	13
14	Issues Related to Facilities of Education	14



## LIST OF FIGURES

Figure No.	Topic	Page No.
1	Faculty and Gender wise Composition of graduates	5
2	Employment Status of the graduates	6
3	Quality and Relevance of Programmes of Humanities	6
4	Quality and Relevance of Programmes of Management	7
5	Quality and Relevance of Programmes of Education	8
6	Programs' Contribution of Graduate of Humanities	8
7	Programs' Contribution of Graduate of Management	9
8	Programs' Contribution of Graduate of Education	10
9	Issues Related to Teacher and Learning of Humanities	11
10	Issues Related to Teacher and Learning of Management	12
11	Issues Related to Teacher and Learning of Education	12
12	Issues Related to Facilities of Humanities	13
13	Issues Related to Facilities of Management	14
14	Issues Related to Facilities of Education	15



## ABBREVIATIONS

E	Employed
U	Unemployed
S	Studying
UGC	University Grants Commission
FWU	Far Western University
TU	Tribhuvan University
NGO	Non Governmental Organization
CMC	Campus Management Committee
EDJ	Educationally disadvantage Janajaties
D	Dalit
QAA	Quality Assurance and Accreditation



# Table of Contents

ACKNOWLEDGEMENT  
EXECUTIVE SUMMARY  
LIST OF TABLES  
LIST OF FIGURES  
ABBREVIATIONS

<b>CHAPTER: ONE</b>	<b>1-3</b>
<b>1. INTRODUCTION:</b>	<b>1</b>
1.1 Background	1
1.2 Objectives of the Study	1
1.3 Institutional Arrangements to Conduct the study	2
1.4 Graduate Batch taken for the Study	2
1.5 Data Collection - Instruments and Approach	2
1.6 Scope and Limitations of the Study	3
<b>CHAPTER: TWO</b>	<b>4-15</b>
2. Data Presentation and Analysis	4
2.1 Employment and Further study Status of the Graduates	4
2.2 Issues Related to the Quality and Relevance	6
2.3 Programmes' Contribution to the Graduates' Professional and Personal Development	8
2.4 Issues Related to Teaching and Learning	11
2.5 Issues Related to Facilities	13
<b>CHAPTER: THREE</b>	<b>16-17</b>
3.1 Findings Employment and Further Study status of the Graduates	16
3.2 Findings Related to the Quality and Relevance issues	16
3.3 Programmes' Contribution to the Graduates' Professional and Personal Development	17
3.4 Findings Related to Teaching and Learning	17
3.5 Findings Related to Facilities	17
<b>CHAPTER: FOUR</b>	<b>18-18</b>
Implication to the Institutional Reform	18
<b>CHAPTER: FIVE</b>	<b>19-20</b>
Conclusion and Recommendation	19
5.1 Conclusion	19
5.2 Recommendations	19
<b>Appendix</b>	
Annex: 1 Tracer Study Profile of Graduates of Humanities	
Annex: 2 Tracer Study Profile of Graduates of Management	
Annex: 3 Tracer Study Profile of Graduates of Education	
Decisions of Tracer Task Team Formation	
Tracer Study Work Plan	



## 1. Introduction

### 1.1 Background

Durgalaxmi Multiple Campus, an emerging academic institution of Far Western Province, is located in Attariya, Kailali, Nepal, gateway to the entire far western Province. The campus is established by the joint effort of local community, politicians, academicians, and other stake holders in 2063 B.S. to provide the light of education to the students for higher education belonging to local community as well as the entire far west including the students of poor, Ethnic, Dalit, Janajati and other educationally disadvantaged groups. The campus aims to fulfill the demand of higher education of the students who, previously, were forced to go far away from the home.

The campus aims to provide quality education in affordable cost through qualified teachers and well management and administration system using latest trends and technology in the field of education. The campus has provision of scholarship, and other grants for the deserving and needy students to bring them into the mainstream of the education and national development.

The campus has its own physical infrastructures constructed in its own land. It has two academic building and two administrative building which have administration section, library, campus office, account sections and staff room. There is easy availability of clean drinking water, separate toilets for girls and boys, and staff. The campus has systematic parking area, garden and plantation area inside the campus premises. The campus is protected by boundary wall with two gates for entry and exit. The campus uses computer and other information technologies for academic and administrative activities.

The campus is constituted to Far-Western University in 2075 B.S., hence it follow the rules and regulation as directed by the university. Additionally,. The campus has its own statute and other regulatory provisions which guide the entire academic and administrative activities of the campus.

### 1.2 Objectives of the Study

The overall objectives of the study are to obtain a better understanding of the employment status of the graduates as well as to identify the issues related to employment experiences, expectations and aspiration of graduates. One of its aims is also to find out the issues related to the quality and the relevance of higher education. The study has also aimed at using the study report for the formulation and amendments of its strategic plan as per the needs and expectation of market and the graduates. Thus, the study will explore the following:



- Investigate employment status of the graduates from this campus of 2023.
- Find out the kinds of programs the graduates are pursuing afterwards.
- Identify the difficulties faced by graduates for the placement in the market after the completion of the program.
- Relate the experience and views of graduates as they evaluate Durgalaxmi Multiple Campus teaching and learning materials, institutional facilities and curriculum, in order to plan for future improvement.

### **1.3 Institutional Arrangements to conduct Study**

To prepare this report, the Admin committee of the campus has formed a committee led by Mr. Siddhas Raj Batta to carry out tracer study. The committee has consulted other committees, accessed to the students via official records, mail, social media and personal contact. After collecting all relevant data, the committee prepared and submitted the report to Admin committee for approval.

### **1.3 Graduate Batch Taken for the Study**

Durgalaxmi Multiple Campus has taken the graduates of 2023 for the Tracer Study as it was the specified benchmark set forth by the UGC. The graduates are taken from the faculty of Humanities, Management and Education. The total number of graduates of 2023 were 199 from all faculties.

### **1.5 Data Collection-Instruments and Approach**

The study has focused on the quality of higher education service provided to the students and the condition under which the graduates have been employed and its role in job-seeking, and how their areas of work are related to the programs offered by the college. Additionally, the study is expected to help identify which programs are still relevant to current market demands and the findings of the study are to analyze the strengths and weaknesses of the College programs, and the relationships between education/ training and labor market needs. Hence, the methodology for this study is driven by the above issues will promote better understanding of the graduates' employability.

To get the needed information, both quantitative and qualitative methods were employed for data collection and a questionnaire for interviewing was piloted to make sure the right information could be collected. The Tracer Study subcommittee collected the graduate list of 2023. The notice for tracer study was shared using the social media/ Facebook. Those who



couldn't come in contact were contacted through telephone and email. Required information was collected; individual forms were filled through face to face interview, telephonic conversation and via mails. All the selected information was compiled, analyzed and evaluated and the final report was prepared.

### **1.6 Scope and Limitations of the Study**

The total number of graduates from Durgalaxmi Multiple Campus in 2023 was 199. Out of which the male graduates were 60 and female graduates were 139. From the Faculty of Management, the total number of graduates was 90 and from the faculty of Education and Humanities it was 86 and 23 respectively. Although the study population was 199, the institution could complete (reach out) 199 number of students' tracer study which makes 100 percentage of the total population.

The study was made upon the graduates of 2023 Durgalaxmi Multiple Campus. It had following limitation.

- This tracer study was conducted to the graduates of 2023 of Durgalaxmi Multiple Campus only.
- The study was conducted within a short period of time and limited budget.
- Beside face to face interview, social media email and telephone contact\conversation were the key tools of data collection.



## 2. Data Presentation and analysis

### Students Details

The total number of the graduates in 2023 from different streams of Durgalaxmi Multiple Campus was 199. The graduates from Faculty of Education were 86. Out of which 50 were the female graduates and 36 were male graduates. Out of 86, 5 graduates belonged to educationally disadvantaged groups and 9 of them were dalit. The graduates from Faculty of Management were 90. Out of which 69 were the female graduates and 21 were male graduates. 5 graduates belonged to educationally disadvantaged groups and 4 were dalit. The graduates from Faculty of Humanities and Social Sciences were 23. Out of which 20 were the female graduates and 3 were male graduates. Out of 23, 3 graduate belonged to educationally disadvantaged groups and none of them were dalits.

**Table 1: Total graduates of the year 2017**

S.N.	Programs	Total Graduates	Female Graduates	Educationally Disadvantaged Graduates	
				Educationally Disadvantaged Janajati	Dalits
<b>Bachelors</b>	B.Ed.	86	20	3	0
	B.B.S.	90	69	5	4
	B.A.	23	50	5	9
<b>Grand Total</b>		199	139	13	13

*Source: Campus administration (Durgalaxmi M. Campus)*

### 2.1 Employment and Further Study Status of the Graduates

Amongst the targeted samples of 199, all of them were able to be reached. Out of 199, only 60 graduates were male and 139 graduates were female. The percentage of male respondents was 30% and female were 70%. Out of the 199 only 85 respondents were employed where as 69 were found unemployed and 45 of them were found pursuing higher studies.



**Table 2: Employment and Further Study Status of the Graduates**

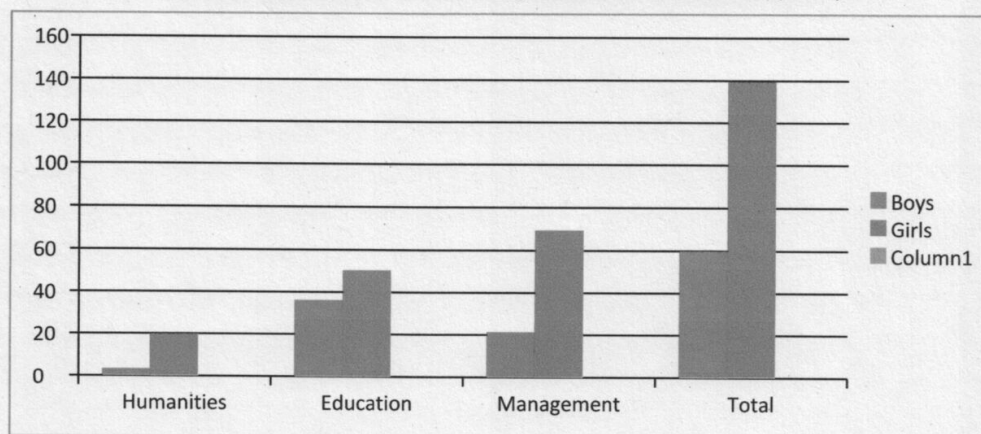
Faculty	Total Number of Graduates Approached	Male	Female	EDJ	Dalit	Employed	Unemployed	Studying
Humanities	23	3	20	3	0	6	12	5
Management	90	21	69	5	4	33	32	25
Education	86	36	50	5	4	46	25	15
Total	199	60	139	13	8	85	69	45

Source: Tracer Study Survey 2023/024(Durgalaxmi M. Campus)

As given in Table 1, 23 graduates of Faculty of Humanities and Social Science were approached. Out of 23, 3 of them were male. The female graduates were 20 and EDJs 3 and Dalits 0. Male respondents in the faculty of Humanities and Social Science were 13.04% and female respondents were 86.96%. Likewise 90 graduates of Faculty of Management were approached. Out of 90, 21 of them were male and 69 were female and 5 of them were from EDJ and 4 from dalit group. Male respondents in the Faculty of Management were 23.33% and female respondents were 76.67%. Similarly, out of 86 students, male respondents in the Faculty of Education were 41.86% female respondents and female respondents in the Faculty of Education were 58.14%. The bar diagram and the figure given below provides the composition and employment status of the graduates of 2023.

**Figure 1: Faculty and Gender wise composition of graduates**

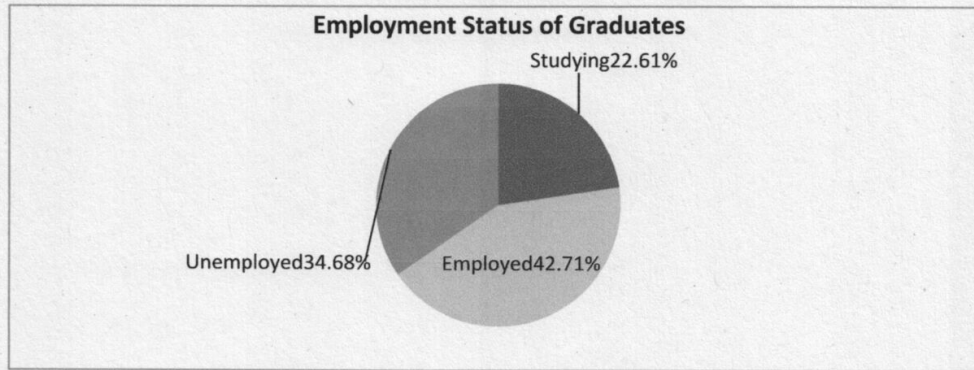
**Faculty and Gender wise Composition of Graduates (2023)**



Source: Tracer Study Survey 2023/024(Durgalaxmi M. Campus)



**Figure 2: Employment status of Graduates**



Source: Tracer Study Survey 2023/024(Durgalaxmi M. Campus)

## 2. Issues Related to Quality and Relevance

One of the major objectives of this tracer study report is to find out the quality delivered by the campus to the graduates of 2023 in particular and all graduates in general. Similarly the study aims at finding out whether the programmes the graduates studied were relevant to their real life. This study presents the issues related to quality of programmes and relevance to their personal and professional life.

### Faculty of Humanities:

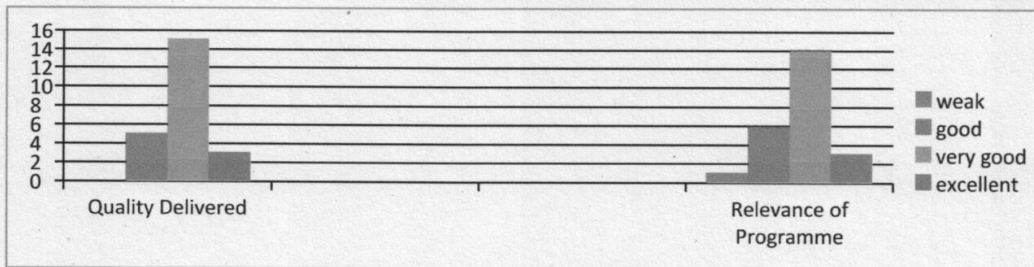
Regarding quality and relevance of the programs the graduates of Faculty of Humanities 2023, the response of total 23 graduates is presented in following table.

**Table No: 3 Quality and Relevance of Program of Humanities**

Programme	Quality Delivered				Relevance of the Programme			
	Weak	Good	Very Good	Excellent	Weak	Good	Very Good	Excellent
B.A.	0	5	15	3	1	6	14	3

Source: Tracer Study Survey 2023/024(Durgalaxmi M. Campus)

**Fig. 3 Quality and Relevance of Program of Humanities**



Source: Tracer Study Survey 2023/024(Durgalaxmi M. Campus)



Table no-3 Shows that 5 graduates out of 23 responded that the quality delivered by the programme of Humanities and Social Sciences was good. Similarly 15 out of 23 mentioned that the delivery of the quality was very good and 3 responded that the quality was excellent. None of the graduates responded the quality weak Regarding relevance of the programme, 6 out of 23 graduates responded as good, 14 responded very good, 3 responded excellent and one of them responded as week.

## 2 Faculty of Management:

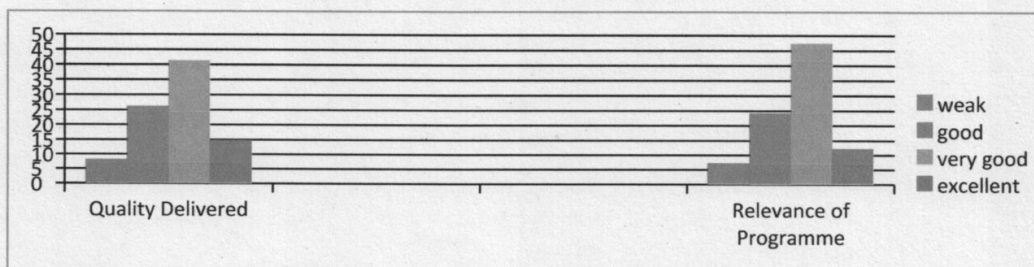
Regarding quality and relevance of the programs the graduates of Faculty of Management 2018, the response of total 34 graduates is presented in following table.

**Table No: 4 Quality and Relevance of Program of Management**

Programme	Quality Delivered				Relevance of the Programme			
	Weak	Good	Very Good	Excellent	Weak	Good	Very Good	Excellent
BBS	8	26	41	15	7	24	47	12

Source: Tracer Study Survey 2023/024(Durgalaxmi M. Campus)

**Fig.. 4 Quality and Relevance of Program of Management**



Source: Tracer Study Survey 2023/024(Durgalaxmi M. Campus)

Table no. - 4. Shows that 26 graduates out of 90 from the Faculty of Management responded that the quality delivered good. Similarly 41 out of 90 mentioned that the delivery of the quality was very good and 8 of the graduates responded the quality weak and 15 of them excellent. Regarding relevance of the programme, 24 out of 90 graduates responded as good, 47 responded very good and 7 of them responded as week and 12 of them excellent.

## 3 Faculty of Education

Regarding quality and relevance of the programs the graduates of Faculty of Education 2016, the response of total 58 graduates is presented in following table.

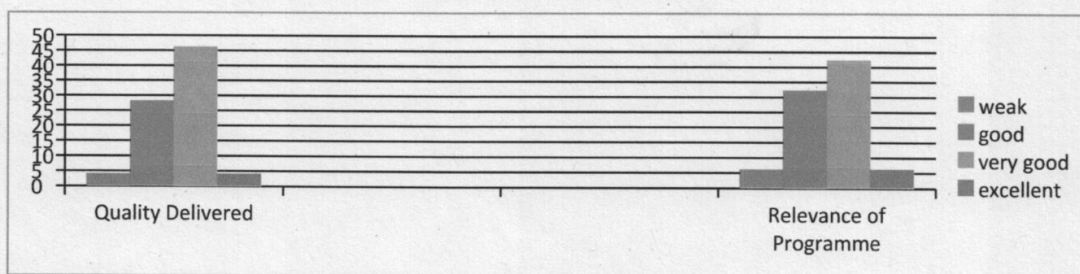
**Table No: 5 Quality and Relevance of Program of Education**

Programme	Quality Delivered				Relevance of the Programme			
	Weak	Good	Very Good	Excellent	Weak	Good	Very Good	Excellent
B.Ed.	4	28	46	8	6	32	42	6

Source: Tracer Study Survey 2023/024(Durgalaxmi M. Campus)



**Fig. 5 Quality and Relevance of Program of Education**



Source: Tracer Study Survey 2023/024(Durgalaxmi M. Campus)

Table no. 5 Shows that 28 graduates out of 86 form the Faculty of Education responded that the quality delivered good. Similarly 46 out of 86 mentioned that the delivery of the quality was very good and 4 responded as quality weak and 8 responded as excellent. Regarding relevance of the programme, 32 out of 86 graduates responded as good, 42 responded very good and 6 responded as week and 6 responded as excellent.

### 2.3. Programmes' Contribution to graduates' professional and personal Development

As Durgalaxmi Multiple Campus runs three programmes namely Education, Humanities and Management, the total respondents responded from the programmes in which they studied. Here is the faculty wise presentation of students' responses.

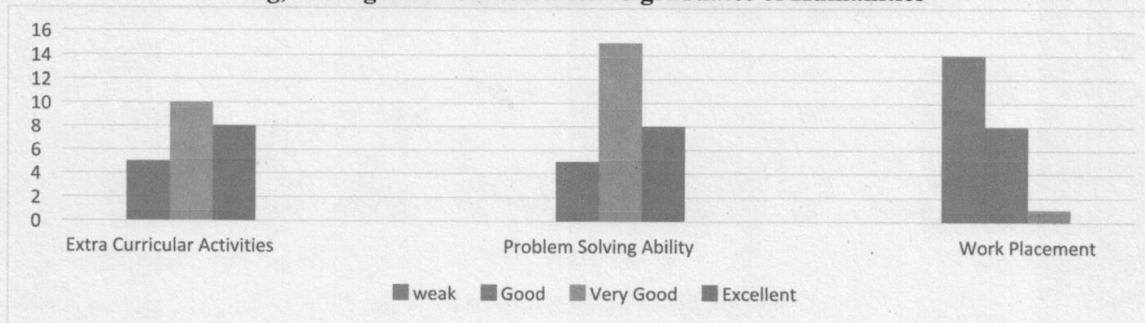
#### Faculty of Humanities

**Table No 6 Programs' Contribution to graduates of Humanities**

Programme	Extra Curricular Activities			Problem Solving Ability			Work Placement			
	Good	Very Good	Excellent	Good	Very Good	Excellent	Weak	Good	Very Good	Excellent
B.A	5	10	8	5	12	6	14	8	1	0

Source: Tracer Study Survey 2023/024(Durgalaxmi M. Campus)

**Fig. 6 Programs' Contribution to graduates of Humanities**



Source: Tracer Study Survey 2023/024(Durgalaxmi M. Campus)



Table no 6 shows the programmes' contribution to the graduates' professional and personal development of the graduates of Faculty of Humanities. Regarding extra- curricular activities, 5 out of 23 graduates responded that extra-curricular activities had good contribution on their personal and professional development,10 of them responded as very good and 8 of them responded it as excellent.

On the issue of problem solving ability, 5 out of 23 graduates responded that the programme had good contribution, 10 of them responded very good and 8 of them responded excellent.

Similarly, in the case of work placement 8 out of 23 graduates responded that the programmes' contribution was good, 1 of them responded that it was very good, and 14 of them responded as weak.

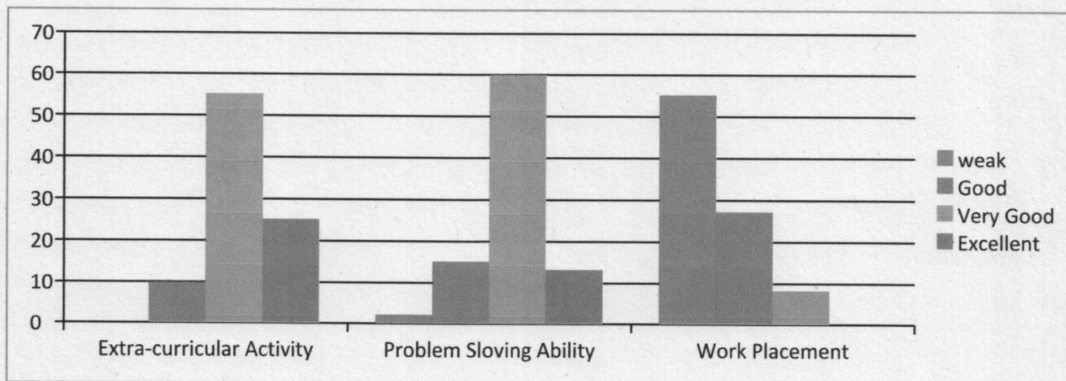
### Faculty of Management

**Table No 7 Programs' Contribution to graduates of Management**

Programme	Extra Curricular Activities			Problem Solving Ability				Work Placement			
	Good	Very Good	Excellent	Weak	Good	Very Good	Excellent	Weak	Good	Very Good	Excell
BBS	10	55	25	2	15	60	13	55	27	8	0

*Source: Tracer Study Survey 2023/024(Durgalaxmi M. Campus)*

**Fig.. 7 Programs' Contribution to graduates of Management**



*Source: Tracer Study Survey 2023/024(Durgalaxmi M. Campus)*

Table no7.shows the programmes' contribution to the graduates' professional and personal development of the graduates of Faculty of Management. Regarding extra- curricular activities, 10 out of 90 graduates responded that extra-curricular activities had good contribution on their personal and professional development, 55 of them responded as very good and 25 of them responded it as excellent.



On the issue of problem solving ability, 15 out of 90 graduates responded that the programme had good contribution, 60 of them responded very good, 13 of them responded excellent and 2 of them responded as weak.

Similarly, in the case of work placement 27 out of 90 graduates responded that the programmes' contribution was good, 8 of them responded that it was very good, none of them responded it as excellent and 55 of them responded as weak.

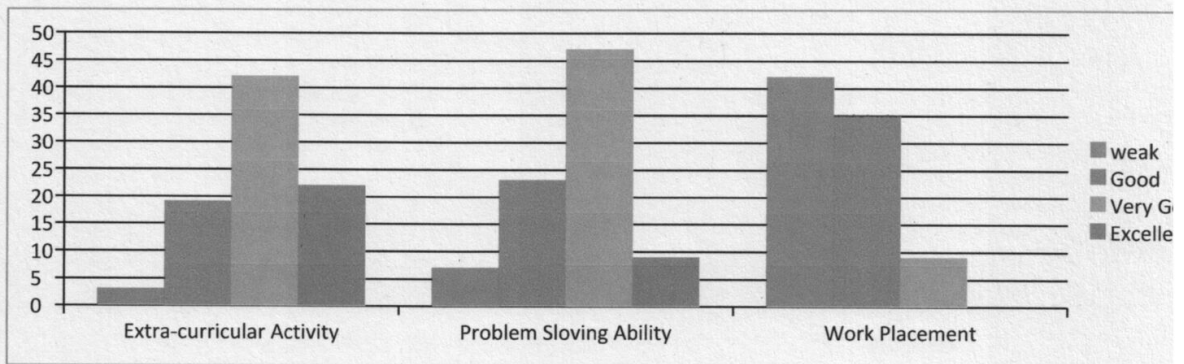
### Faculty of Education

**Table No 8 Programs' Contribution to graduates of Education**

Program	Extra Curricular Activities				Problem Solving Ability				Work Placement			
	Weak	Good	Very Good	Excellent	Weak	Good	Very Good	Excellent	Weak	Good	Very Good	Excellent
B.Ed.	3	19	42	22	7	23	47	9	42	35	9	0

Source: Tracer Study Survey 2023/024(Durgalaxmi M. Campus)

**Fig. 8 Programs' Contribution to graduates of Education**



Source: Tracer Study Survey 2023/024(Durgalaxmi M. Campus)

Table no 8 shows the programmes' contribution to the graduates' professional and personal development of the graduates of Faculty of Education. Regarding extra- curricular activities, 19 out of 86 graduates responded that extra-curricular activities had good contribution on their personal and professional development, 42 of them responded as very good, 3 of them responded as weak and 22 of them responded it as excellent.

On the issue of problem solving ability, 23 out of 86 graduates responded that the programme had good contribution, 47 of them responded very good , 7 of them responded as week and 9 of them responded excellent.

Similarly, in the case of work placement 35 out of 86 graduates responded that the programmes' contribution was good, 9 of them responded that it was very good and 42 of them responded it as weak.



## 2.4. Issues Related to Teaching and Learning

The present study report aims at finding out the issues related to teaching and learning. Out of 199 respondents from three faculties graduates expressed various views on teaching and learning which is presented faculty wise in following tables.

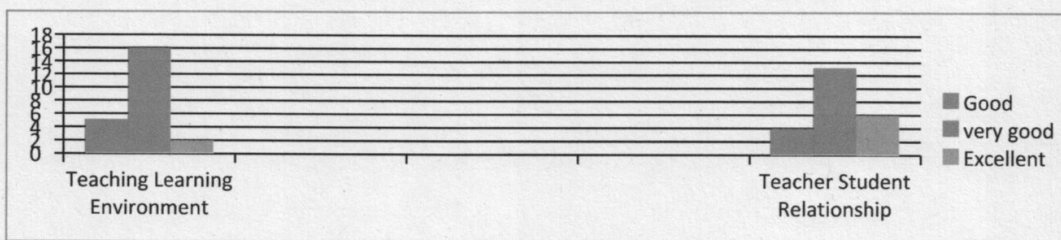
### Faculty of Humanities

**Table No 9 Issues Related to Teaching and Learning of Humanities**

Programme	Teaching learning environment			Teacher Students Relationship			
	Good	Very Good	Excellent	Weak	Good	Very Good	Excellent
B.A	5	16	2	0	4	13	6

Source: Tracer Study Survey 2023/024(Durgalaxmi M. Campus)

**Fig., 9 Issues Related to Teaching and Learning of Humanities**



Source: Tracer Study Survey 2023/024(Durgalaxmi M. Campus)

Table no 9 shows the issues related to teaching and learning of the graduates of Faculty of Humanities. Regarding teaching learning environment, 5 out of 23 graduates responded that the teaching learning environment in the campus was good, 16 of them responded as very good and 2 of them responded it as excellent.

On the issue of teacher –student relationship, 4 out of 23 graduates responded that the relationship between the teachers and students was good, 13 of them responded very good and 6 of them of them responded excellent.

### Faculty of Management

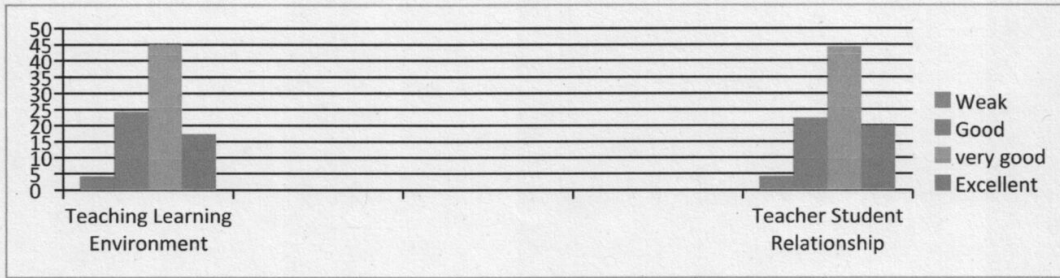
**Table No 10 Issues Related to Teaching and Learning of Management**

Programme	Teaching learning environment				Teacher Students Relationship			
	Weak	Good	Very Good	Excellent	Weak	Good	Very Good	Excellent
BBS	4	24	45	17	4	22	44	20

Source: Tracer Study Survey 2023/024(Durgalaxmi M. Campus)



**Fig. 10 Issues Related to Teaching and Learning of Management**



Source: Tracer Study Survey 2023/024(Durgalaxmi M. Campus)

Table no 10 shows the issues related to teaching and learning of the graduates of Faculty of Management. Regarding teaching learning environment, 24 out of 90 graduates responded that the teaching learning environment in the campus was good, 45 of them responded as very good and 17 of them responded it as excellent and 4 of them responded it as weak.

On the issue of teacher–student relationship, 22 out of 90 graduates responded that the relationship between the teachers and students was good, 44 of them responded very good, 4 of them responded as weak and 20 of them of them responded excellent.

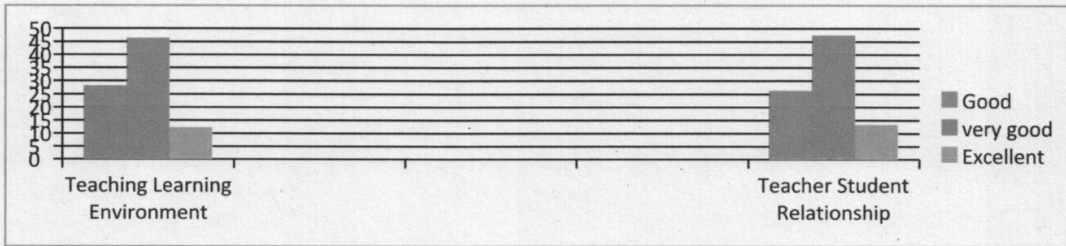
**Faculty of Education**

**Table No 11 Issues Related to Teaching and Learning of Education**

Programme	Teaching learning environment			Teacher Students Relationship		
	Good	Very Good	Excellent	Good	Very Good	Excellent
B.Ed.	28	46	12	26	47	13

Source: Tracer Study Survey 2023/024(Durgalaxmi M. Campus)

**Fig,11 Issues Related to Teaching and Learning of Education**



Source: Tracer Study Survey 2023/024(Durgalaxmi M. Campus)

Table no11 .shows the issues related to teaching and learning of the graduates of Faculty of Education. Regarding teaching learning environment, 28 out of 86 graduates responded that the teaching learning environment in the campus was good, 46 of them responded as very good and 12 of them responded it as excellent.



On the issue of teacher –student relationship, 26 out of 86 graduates responded that the relationship between the teachers and students was good, 47 of them responded very good and 13 of them of them responded excellent.

### 2.5. Issues Related to Facilities

The 84 respondent graduates have various views on the issues related to facilities like, library, lab, canteen, sports etc provided by the campus to the graduates. The response of the graduates related to facilities issues is presented faculty wise in the following table.

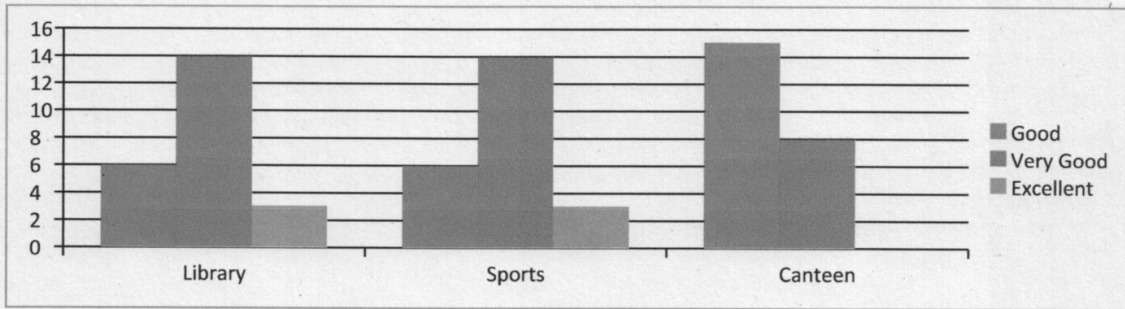
#### Faculty of Humanities

**Table No 12 Issues Related to Facilities of Humanities**

Programme	Library			Sports			Canteen		
	Good	Very Good	Excellent	Good	Very Good	Excellent	Good	Very Good	Excellent
B.A	6	14	3	6	14	3	15	8	0

Source: Tracer Study Survey 2023/024(Durgalaxmi M. Campus)

**Fig. 12 Issues Related to Facilities of Humanities**



Source: Tracer Study Survey 2023/024(Durgalaxmi M. Campus)

Table no 12 .shows the issues related to facilities provided to the graduates of Faculty of Humanities by the campus.. Regarding library facility, 6 out of 23 graduates responded that the library facility was good, 14 of them responded as very good and 3 of them responded it as excellent.

On the issue of sports facility, 6 out of 23 graduates responded that the sports facility provided by the campus was good, 14 of them responded very good and only 3 them of them responded excellent.



Regarding canteen facility, 15 of 23 graduates responded that canteen facility was good, 8 of them responded very good and no one of them responded the facility excellent.

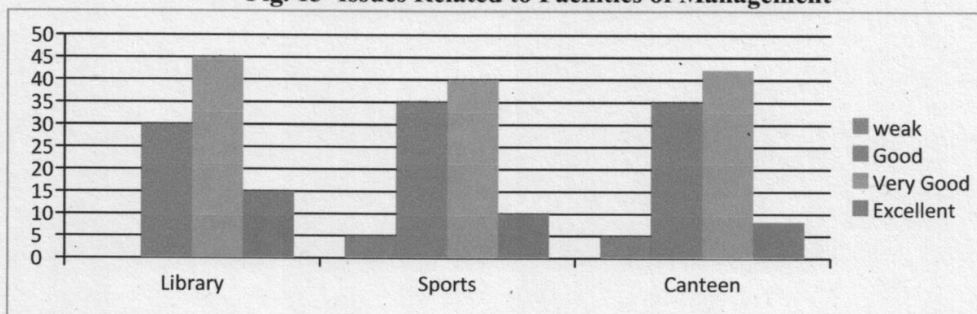
### Faculty of Management

**Table No 13 Issues Related to Facilities of Management**

Programme	Library			Sports				Canteen			
	Good	Very Good	Excellent	Weak	Good	Very Good	Excellent	Weak	Good	Very Good	Excellent
BBS	30	45	13	5	35	40	10	5	35	42	8

Source: Tracer Study Survey 2023/024(Durgalaxmi M. Campus)

**Fig. 13 Issues Related to Facilities of Management**



Source: Tracer Study Survey 2023/024(Durgalaxmi M. Campus)

Table no13 shows the issues related to facilities provided to the graduates of Faculty of Management by the campus.. Regarding library facility, 30 out of 90 graduates responded that the library facility was good, 45 of them responded as very good and 13 of them responded it as excellent.

On the issue of sports facility, 35 out of 90 graduates responded that the sports facility provided by the campus was good, 40 of them responded very good, 5 of them responded as weak and 10 of them of them responded excellent.

Regarding canteen facility, 35 of 90 graduates responded that canteen facility was good, 42 of them responded very good, 5 of them responded as weak and 8 of them responded the facility excellent.

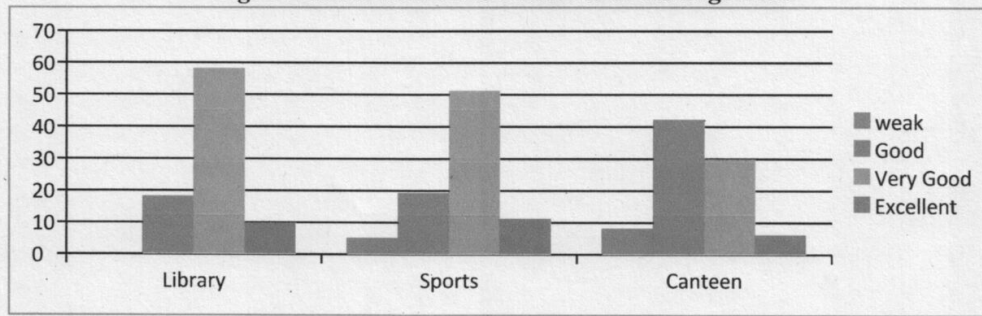
### Faculty of Education

**Table No 14 Issues Related to Facilities of Education**

Programme	Library			Sports				Canteen			
	Good	Very Good	Excellent	Weak	Good	Very Good	Excellent	Weak	Good	Very Good	Excellent
B.Ed.	18	58	10	5	19	51	11	8	42	30	6



**Fig. 14 Issues Related to Facilities of Management**



Source: Tracer Study Survey 2023/024(Durgalaxmi M. Campus)

Table no14 .shows the issues related to facilities provided to the graduates of Faculty of Education by the campus.. Regarding library facility, 18 out of 86 graduates responded that the library facility was good, 58 of them responded as very good and 10 of them responded it as excellent.

On the issue of sports facility, 19 out of 18 graduates responded that the sports facility provided by the campus was good, 51 of them responded very good, 11 of them responded excellent and 5 of them of them responded weak.

Regarding canteen facility, 35 of 86 graduates responded that canteen facility was good, 42 of them responded very good, 8 of them responded as excellent and 5 of them responded the facility weak.



## Major Findings

The Tracer Study report of Durgalaxmi Multiple Campus was the fifth of its kind .It was inspired and encourage by the UGC-Nepal. This Tracer Study report was based on the graduates of 2023 only. The overall objectives of the study were to find out the employments of graduates, their current position and the study of relevancy of the programs and issues related to quality, contribution, teaching learning and physical facilities. It also aimed at finding out the views of graduates on institutional facilities, curriculum, and future improvements. The study has pointed out followings findings:

### 3.1 Findings related to employment and further study status of graduates

- Out of 199 graduates 85 graduates from the faculty of Humanities, Management and Education are employed, 69 graduates are found to be unemployed and 45 graduates (22.62% in total) are found to be studying further.
- This result shows that 69 students are Preparing for job and now they are unemployment.
- Majority of employed graduates are females.
- The number of Male and female graduates pursuing further study is no equal; 77.77% female graduates and only 23.33% male graduates are found to be studying at higher level.
- The study shows that 34.67% graduates remain unemployed.

### 3.2 Findings related to Quality and Relevance issues

- The study shows that 18 graduates (78.26%) from Humanities, 56 graduates (72.22%) from Management and 54 graduates (62.79%) from Education are highly satisfied with the quality of education provided by the campus.
- Similarly 17 graduates (73.91%) from Humanities, 59 graduates ( 65.55%) from Management and 48 graduates (55.81%) from Education are just found the program they studied relevant.
- Minority of the student responded the quality of Education and relevance of the programs weak.



### **3.3 Findings related program contribution to the graduates**

- 18 graduates (78.26%) from Humanities, 80 graduates (88.88%) from Management, 66 graduates (76.74%) from Education are found to be highly benefitted by the extra-curricular activities conducted by the campus.
- 18 graduates (78.26%) from Humanities, 73 graduates (81.11%) from Management, 56 graduates (65.11%) from Education found to have developed problem solving ability.
- Minority of the graduates are found to have weak problem solving ability.

### **3.4 Findings related Teaching Learning**

- Majority of the graduates from Humanities, Management and Education found teaching and learning environment satisfactory.
- Majority of the graduates from Humanities, Management and Education found the relationship between teacher and students good.
- Minority of the graduates are highly satisfied with teaching learning environment and the relation between teacher and student.

### **3.5 Findings related Facilities**

- Majority of the graduates from Humanities, Management and Education found to be satisfied with library, sports and canteen facilities provided by the campus.
- Minority of the graduates are found to be extremely satisfied with the facilities provided by the campus.



## Implication to Institutional Reform

Based on the findings of the survey, the institution needs to carryout following improvement plans about the courses offered, teaching learning environment, quality of delivery, teacher student relationship, extracurricular activities, library/lab facilities etc. The institution has to carryout action research on above aspects on a regular basis. At the same time tracer study like this has to be carried out regularly to find out the where about of its products and the effectiveness of its programs. Besides these, following activities are suggested for the institutional reforms:

- Campus has to conduct various level (administration, staff, and students) discussions on the Tracer Study Report and its findings.
- Campus has to review its five year strategic plans to meet the changing needs of the students.
- Campus has to develop the system of continuous assessment of its programs and collect the feedbacks regularly.
- The campus has to make students record keeping system more effective.
- The Campus has to offer programs that are market oriented and more practice based.



## Conclusion and Recommendation

### 5.1 Conclusion

From the above findings, a number of conclusions can be drawn about the employment opportunities from our graduates currently in the field and relevancy of the college programs, teaching learning environment, quality of delivery, teacher student relationship, extracurricular activities, library/lab facilities etc. Following are the major conclusions which respond to the research objectives that were set out for this study.

- This study report is the second effort to find out about the employability of the graduates. It has provided both feedback and review on employability and college programs.
- Majority (42.71%) of the graduates seemed to have jobs. It can be inferred that the graduates give high priority to gain job.
- Among the employed graduates, more females are employed than males. Further research is required to find out the employment opportunities for both genders.
- The graduates from the Faculty of Education have more chances of getting employed than the graduates of other faculties.
- The analysis of employed shows that job holders are engaged in the field of study they pursued at bachelor level.
- The findings show that EDJs and Dalits are nominal at Masters Level and their employability is very low.
- The programs offered by the institution slightly address the current needs of the market.
- The graduates have the expectation that college should help those finding jobs and start market oriented programs.

### 5.2 Recommendations

The Tracer Study Team conducted the Tracer study of graduates of 2023. The study was conducted within a short period of time. Being the second of its kind for Durgalaxmi Multiple Campus, It has provided both feedback and review on employability, job satisfaction of graduates and the effectiveness of campus programs. Based on the conclusions of the Tracer Study report, following recommendations are suggested:



- The task of Tracer study should be made an integral part of teaching learning program in future.
- The strategic plan of Durgalaxmi Multiple Campus should incorporate the suggestions made on Tracer study Report.
- The college should promote wide range professional courses, field based learning, counseling etc.
- The EDJs and Dalit students should be provided more incentives to bring them into the mainstream of the nation.
- The campus should enhance its library, sports, laboratory and canteen facilities.
- The institute should intensify the relationship between parent-teacher and teacher-students.

**The End**





**Employment Status**

Name	Institutions\Address	Designation	Types of Institution
BHAGWATI CHAUDHARY	J.K. English Boarding Attariya, Kailali	Teacher	Private
KANCHAN DEVKOTA	Gyan Jyoti School Attariya, Kailali	Teacher	Private
LALMANI JOSHI	Bashudev Ma.Vi. Doti	Teacher	Public
INDRA BHANDARI	Holyland English Boarding School Attariya	Teacher	Private
MANISHA BOGATI	Ridge Academy Krishnapur	Teacher	Private
TARA SHAHU	Jana Naulo Sahakari	Assistant	Public



**Annex: 2 Tracer Study Profile of Durga Laxmi Multiple Campus Attariya, Kailali**

Graduation Year: 2023

Level :Bachelor Degree

Faculty: Management

Status: E=Employed=Unemployed S= Studying ,\*=EDJ(Educationally Disadvantage and Janjati), D=Dalit

S.N.	Name of Graduates Students	Sex	EDJD	Faculty/Program	Status	Contact No.	Remarks
1	AARATI KUMARI JOSHI	F		Management/BBS	E	9845638036	
2	AASAN KHADKA	M		Management/BBS	S	9840046443	
3	ANJALI OJHA	F		Management/BBA	U	9848981362	
4	ANJALI THAKURATHI	F		Management/BBA	S	9868540223	
5	ANUSHA MADAI	F		Management/BBS	E	9862150224	
6	ASMITA SAUD	F		Management/BBS	S	9840625922	
7	BABITA KAPADI	F		Management/BBA	S	9814641242	
8	BASANT BHATTRAI	M		Management/BBA	E	9864750787	
9	BASANTI AWASTHI	f		Management/BBS	S	9868726757	
10	BASANT PRASAD BHATTA	M		Management/BBS	S	9825604959	
11	BASANTI BHATT	F		Management/BBS	U	9848991042	
12	BASANTI BHATTA	F		Management/BBS	S	9864750032	
13	BHAGRATHI KATHAYAT	F		Management/BBS	U	9864609504	
14	BHAGRTHI BHATTRAI	F		Management/BBS	S	9844170661	
15	BHAWANA BHAT	F		Management/BBS	E	9848456910	
16	BHAWANA OJHA	F		Management/BBS	E	9848546379	
17	BIMALA KUMARI JAISHI	F		Management/BBS	U	9848857493	
18	BIRENDRA BHAT	M		Management/BBA	E	9864750288	
19	BISHNU PRASAD DHIKTA	M		Management/BBS	U	9864750614	
20	CHADANI SAUD	F		Management/BBS	E	9868760525	
21	CHITRA DHAMI	F		Management/BBS	U	9847567249	
22	DAMMARI ROKAYA	F		Management/BBS	U	9864613627	
23	DEEPSHIKHA SINGH	F		Management/BBA	U	9864758822	
24	DHARMA RAJ BHATTA	M		Management/BBS	E	9866109481	
25	GANESH SAUD	M		Management/BBS	U	9865929913	
26	GITA BIST	F		Management/BBA	S	9800637550	
27	GOMATI BHATTRAI	F		Management/BBS	U	9863693433	
28	HARI PRASAD SAPKOTA	M		Management/BBS	U	9864643467	
29	HEENA THAKULLA	F		Management/BBA	E	9865575794	
30	HEMANTI BHATTRAI	F		Management/BBS	U	9869952788	
31	INDRA MADAI	F		Management/BBS	U	9865634712	
32	ISHWORI PANDEY	F		Management/BBS	S	9866605365	
33	KABITA BHATTRAI	F		Management/BBS	S	9864750511	
34	KALPANA KADAYAT	F		Management/BBS	S	9865960386	
35	KRISHNA PRASAD JOSHI	M		Management/BBS	E	9844162802	
36	KUMAR KHADKA	M		Management/BBA	U	9749800227	



37	LAXMAN BHATTRAI	M		Management/BBS	U	9745701688
38	LAXMAN BOHARA	M		Management/BBS	E	9825664555
39	LAXMI BHATTA	F		Management/BBS	E	98222133539
40	LAXMI CHUNARA	F	D	Management/BBS	S	9847527530
41	LAXMI KUMARI CHAUDHARY	F	*	Management/BBS	E	9866109379
42	LAXMI PHULARA	F		Management/BBS	S	9769934159
43	LILA BOHARA	F		Management/BBA	E	9868802662
44	MANJU KHADKA	F		Management/BBA	E	9814612305
45	MIRA SHAH	F		Management/BBS	S	9842887178
46	NANDA KUMARI KHATI	F		Management/BBS	S	9865978973
47	NANISHA KANDEL	F		Management/BBS	E	9863111003
48	NIRMALA JOSHI	F		Management/BBS	S	9868363817
49	NIRMALA KADAYAT	F		Management/BBS	S	9866109350
50	NIRMALA PHULARA	F		Management/BBS	U	9864311795
51	NISHA KUMARI BOHARA	F		Management/BBS	E	9814677364
52	PABITRA AUJEE	F	D	Management/BBA	U	9865574949
53	PABITRA JOSHI	F		Management/BBA	U	9825609183
54	PADMA BIST	F		Management/BBS	U	9769926817
55	PARBATI B.K.	F	D	Management/BBS	U	9865911272
56	PARBATI KHADKA	F		Management/BBA	U	9841739821
57	PARWATI DHANUK	F		Management/BBS	S	9865733251
58	PHARITA MALLA	F		Management/BBS	S	9865775960
59	POOJA OJHA	F		Management/BBA	S	9815682824
60	PRASANSHA SAPKOTA	F		Management/BBS	E	9815655541
61	PUSHPA RAJ PUNMAGAR	M	*	Management/BBS	E	9825609308
62	PUSPA KUMARI OJHA	F		Management/BBS	U	9841699024
63	RADHA BHATTA	F		Management/BBA	E	9741734962
64	RADHA PANERU	F		Management/BBS	S	9848681984
65	RADHIKA SHRESTHA	F	*	Management/BBA	U	9844118550
66	RAJAN BOHARA	M		Management/BBS	S	9812657302
67	RAJU BHATTRAI	F		Management/BBS	S	9868769531
68	RAMITA CHAUDHARY	F	*	Management/BBS	U	9866657714
69	RITU MALLA	F		Management/BBS	U	9863111003
70	SANDHYA OAD	F		Management/BBS	E	9815633928
71	SANTOSH BOGATI	M		Management/BB	U	9865758825
72	SANTOSH OJHA	M		Management/BBS	E	98659113856
73	SAROJ THAGUNNA	M		Management/BBS	E	9868383668
74	SHANGITA MALLA	F		Management/BBS	E	9765919961
75	SHANTI PANDEY	F		Management/BBS	U	9865704495
76	SHANTU KUMARI PATHAK	F		Management/BBS	E	



	SITA BOHARA								9842885902
78	SUSHILA CHAUDHARY	F	*		Management/BBS		U		9749452615
79	SUSHILA MAHARA	F			Management/BBS		U		9869626644
80	TIKESHWARI DHAMI	F			Management/BBS		U		9864608312
81	TIKESHWORI SAUD	F			Management/BBS		E		9810725927
82	TULSI AWASTHI	F			Management/BBS		E		9864311782
83	USHA BHATTA	F			Management/BBS		S		9746265017
84	USHA KUMARI SAUD	F			Management/BBS		S		9867943906
85	VIDYA SAGAR JOSHI	M			Management/BBA		E		9865887730
86	VISHAL BISHWOKARMA	M	D		Management/BBA		E		9815655707
87	BISHAL KHADKA	M			Management/MBM		E		9848647044
88	DEEPAK JOSHI	M			Management/MBS		E		9840170953
89	DURGA BOGATI	F			Management/MBS		E		
90	TRIPTI PATHAK	F			Management/MBS		E		9868582022

**Graduates status summary :**

Total Graduates: 90  
 Graduates out of contact: 0  
 Traced Graduates 90  
 Employed: 33  
 Unemployed: 32  
 Graduates pursuing further Study : 25  
 Male: 21  
 Female:69  
 EDJ: 5  
 Dalit: 4

**Number of students enrolled in Master Degree in various Institutions**

- Central Campus -1
- Durgalaxmi Multiple Campus Attariya, Kalali-18
- Shankar Dev Campus- 2
- Abroad-3
- Accham Multiple Campus-1



**Employment Status**

Name	Institutions\Address	Designation	Types of Institution
AARATI KUMARI JOSHI	Guras Academy Attariya, Kailali	Teacher	Private
ANJALI THAKURATHI	Abroad Australiya	Salesman	Private
BASANT BHATTRAJ	Florida Laboratory	MR	Private
BHAWANA BHAT	Garima Bikash Band	Assistant	Private
BHAWANA OJHA	Abroad USA	Salesman	Private
BIRENDRA BHAT	Gandaki Credit	Marketing Representative	Private
CHADANI SAUD	BB Mart Kathamandu	Marketing	Private
DHARMA RAJ BHATTA	Vegetable Farming	Proprietor	Own

KRISHNA PRASAD JOSHI	Nepal SBI Bank		Training Assistant	Private
LAXMAN BOHARA	Krishni Bikash Farm Mahendranagar		Accountant	Government
LAXMI BHATTA	Sudurpachima Krishni Sahakari		Accountant	Public
LAXMI KUMARI CHAUDHARY	3DVL Sahakar		Marketing Assistant	Public
LILA BOHARA	Bina English School Banbehada, Kailali		Teacher	Private
MANJU KHADKA	Kamana Bikash Bank		Assistant	Private
NANISHA KADEL	Royal Enfield Showroom		Marketing Manager	Private
NISHA KUMARI BOHARA	Garima Bikash Bank		Assistant	Private
PRASANSHA SAPKOTA	Guras Academy Attariya, Kailali		Teacher	Private
PUSHPA RAJ PUNMAGAR	SHI Project Kailai			NGO
RADHA BHATTA	Jay Ma Durga Gramin Bidhut Sahakari		Assistant	Public
SANDHYA OAD	Fancy Store		Proprietor	Own
SAROJ THAGUNNA	Krishni Sahakari		Assistant	Public
SANTOSH OJHA	Kamana Sewa Bikash Bank		Assistant	Private
SHANGITA MALLA	Khaptad Sec. School		Teacher	Private
SHANTU KUMARI PATHAK	Janakalyan Sec. School		Teacher	Private
TIKESHWORI SAUD	Business Mobile		Accountant	Private
TULSI AWASTHI	Cambridge Public School		Accountant	Public
VIDYA SAGAR JOSHI	Planet VT Institute		Teacher	Private
VISHAL BISHWOKARMA	NIC Asia Bank		Assistant	Private
BISHAL KHADKA	NIC Asia Bank		Senior Assistant	Private
DEEPAK JOSHI	Sidhartha Bank		Senior Assistant	Private
DURGA BOGATI	NMB Bank		Assistant	Private
TRIPTI PATHAK	NLIC Attariya, Kailali		Branch Manager	Private



**Annex: 3 Tracer Study Profile of Durgalaxmi Multiple Campus Attariya, Kailali**

Graduation Year: 2023

Level : Bachelor Degree

Faculty: Education

Status: E=Employed=Unemployed S= Studying \*=EDJ(Educationally Disadvantage and Janjati),D=Dalit

S.N.	Name of Graduates	Sex	EDJD	Faculty/Program	Status	Contact No.	Remarks
1	ANITA CHAND	F		Education/B.Ed	U	9746268747	
2	ANURADHA KHADKA	F		Education/B.Ed	S	9866521319	
3	BHABANA OJHA	F		Education/B.Ed	S	9848211736	
4	BHAGRATHI BK	F	D	Education/B.Ed	U	9848064160	
5	BHAKTA BAHADUR DHAMI	M		Education/B.Ed	E	9865792312	
6	BINDU KUMARI PATHAK	F		Education/B.Ed	U	9865660128	
7	BINITA CHAND	F		Education/B.Ed	U	9848417762	
8	CHAKRA KHADKA	M		Education/B.Ed	E	9865566718	
9	DANI BHUL	M	D	Education/B.Ed	E	9812659075	
10	DEEPA NIRLAULA	F		Education/B.Ed	U	9865644240	
11	DHAN BAHADUR DHAMI	M		Education/B.Ed	E	9865623028	
12	DHANANJAYA RANA	M		Education/B.Ed	E	9868748148	
13	DINESH KHADKA	M		Education/B.Ed	S	9848212532	
14	GANESH BK	M	D	Education/B.Ed	E	9848556913	
15	GITA MALI	F		Education/B.Ed	E	9864616271	
16	GOMA KUMARI BHATTRAJ	F		Education/B.Ed	E	9866323205	
17	HEMANTI DHAMI	F		Education/B.Ed	U	9868705977	
18	HIKMAT SAUD	M		Education/B.Ed	E	9865605265	
19	HIRA KUMARI BOHARA	F		Education/B.Ed	S	9865648841	
20	INDRA AWASTHI	M		Education/B.Ed	E	9862460524	
21	JEEWAN BIST	M		Education/B.Ed	E	9865934313	
22	JYOTI BIST	F		Education/B.Ed	S	9800678502	
23	KAILASH BK	M	D	Education/B.Ed	E	9766591155	
24	KANJAL BHATTA	F		Education/B.Ed	U	9815619556	
25	KARISHMA BHATTRAJ	F		Education/B.Ed	U	9746323999	
26	KARISHMA SINGH	F		Education/B.Ed	E	9840625890	
27	KESHAV SAUD	M		Education/B.Ed	E	9848456892	
28	KHADAK BAHADUR BIST	M		Education/B.Ed	E	9860729504	



29	KIRAN BHATT	F		Education/B.Ed	E	9868580106
30	KRISHAN BAHADUR DHAMI	M		Education/B.Ed	E	9868794656
31	KRISHNA BAHADUR BK	M	D	Education/B.Ed	E	9864634955
32	KRISHNA MAHATA	F		Education/B.Ed	U	9800637935
33	KULBIR CHAUDHARY	M	*	Education/B.Ed	E	9824656325
34	KUMARI NIRMALA THAGUNNA	F		Education/B.Ed	U	9868710582
35	LOG BAHADUR CHAYADA	M		Education/B.Ed	S	9865802995
36	MAHESH RAJ JOSHI	M		Education/B.Ed	E	9866100041
37	NABIN CHANDRA PANDEY	M		Education/B.Ed	E	9848781303
38	NARESH BAHAUR DHAMI	M		Education/B.Ed	U	9866108239
39	NETRA KHADKA	M		Education/B.Ed	U	9840859515
40	NIRMALA BIST	F		Education/B.Ed	E	9848529738
41	NIRMALA BOHARA	F		Education/B.Ed	S	9742414354
42	NIRMALA JOSHI	F		Education/B.Ed	U	9840620628
43	NIRMALA KUMARI THAPA	F		Education/B.Ed	E	9868470477
44	PABITRA BINADI	F		Education/B.Ed	S	9865676305
45	PABITRA KUMARI BOHARA	F		Education/B.Ed	U	9863241665
46	PABITRA NAUNYAL	F		Education/B.Ed	S	9868553320
47	PINKI WOD	F	D	Education/B.Ed	U	9749443813
48	PRAKASH NEPALI	M	D	Education/B.Ed	E	9869443508
49	PRAKASH SINGH DHAMI	M		Education/B.Ed	E	9868752505
50	PUNAM KUMARI CHAYDHARY	F	*	Education/B.Ed	U	9844689455
51	PURNIMAYA KHATRI	F		Education/B.Ed	U	9844150876
52	PUSPA CHAND	F		Education/B.Ed	E	9865906251
53	PUSPA MALLA	F		Education/B.Ed	U	9824686521
54	RAJANI CAHAUDHRAY	F	*	Education/B.Ed	U	9868857514
55	RAJU KUMARI RAWAL	F		Education/B.Ed	E	9868726237
56	RAM DATT BHATTRAI	M		Education/B.Ed	S	9847110960
57	ROSHAN JOSHI	M		Education/B.Ed	U	9868542295
58	SANGITA BIST	F		Education/B.Ed	S	9864770024
59	SARSWATHI AWASTHI	F		Education/B.Ed	U	9865929725
60	SHANTI KHADKA	F		Education/B.Ed	U	9746321990



61	SHARDA KARKI	F		Education/B.Ed	S	9865635640
62	SHIV RAJ OJHA	M		Education/B.Ed	E	9866108606
63	SIMRAN CHAUDHARY	F	*	Education/B.Ed	S	9868568042
64	SIRJANA CHUNARA	F		Education/B.Ed	S	9868574496
65	SUMITRA RAWAL	F		Education/B.Ed	U	9866542543
66	SUSHIL BHANDARI	M		Education/B.Ed	E	9824648644
67	SWASTIKA PARIYAR	F	D	Education/B.Ed	E	9865801872
68	TARA SAUD	F		Education/B.Ed	E	9824697330
69	TARA BIST	F		Education/B.Ed	E	9866109300
70	YASHODA BHATTA	F		Education/B.Ed	U	9842239242
71	YOGENDRA BADAILA	M		Education/B.Ed	S	9804697314
72	BHAGRATHI BHATTA	F		Education/M.Ed	E	
73	BHUPENDRA CHAND	M		Education/M.Ed	E	9858484278
74	BINDRA PANDEY	F		Education/M.Ed	E	9868942944
75	CHANDRAKALA BHATTA	F		Education/M.Ed	E	9824638090
76	DINESH BK	M	D	Education/M.Ed	E	9848674597
77	JANAK BAHADUR DHAMI	M		Education/M.Ed	E	9848879026
78	JAY RAJ JOSHI	M		Education/M.Ed	E	9863361657
79	KESHAB RAJ BHATTA	M		Education/M.Ed	E	9864643843
80	NANITA KUMARI THAPA	F		Education/M.Ed	E	9869972538
81	RABIN KADAYAT	M		Education/M.Ed	E	9841032684
82	RABINDRA BHATTA	M		Education/M.Ed	E	9848423590
83	SARALA MAJHI	F		Education/M.Ed	U	9867868100
84	SARASWATI ROKAYA	F		Education/M.Ed	E	9867868100
85	SUNDEBATI K.RANA	F	*	Education/M.Ed	E	9868793784
86	TAP RAJ OJHA	M		Education/M.Ed	E	9848483787

Number of students enrolled in Master Degree in various Institutions

- Kailali Multiple Campus , Kailali -1
- Centre Campus -5
- Durgaxmi Multiple Campus-8
- Abroad-1

Graduates status summary :

Total Graduates: 86

Graduates out of contact:0

Traced Graduates 86

Employed: 46



Unemployed: 25  
 Graduates pursuing further Study : 15  
 Male:36  
 Female:50  
 EDJ:5  
 Dalit: 9

**Employment Status**

Name	Institutions\Address	Designation	Types of Institution
BHAKTA BAHADUR DHAMI	Maharaja Adharvut Vidhyalaya	Teacher	Government
CHAKRA KHADKA	Jhalak Suppliers	Marketing	Private
DANI BHUL	Kalpa Paathashala	Teacher	Private
DHAN BAHADUR DHAMI	Bhawani Aadharbhut Bidhayalay	Teacher	Government
DHANANJAYA RANA	Armed Police Force	ASI	Government
GANESH BK	Jyoti Secondary School	Teacher	Private
GITA MALI	Kids Zone Attariya, Kailali	Teacher	Private
GOMA KUMARI BHATTRAJ	Gyan Jyoti Sec. Attariya, Kailali	Teacher	Private
HIKMAT SAUD	Impact Nepal	Senior Assistant	NGO
INDRA AWASTHI	Own Business	Proprietor	Own
JEewan BIST	Nepal Police	ASI	Government
KAILASH BK	Bina Vidhya Niketan	Teacher	Private
KARISHMA SINGH	Const. Kathmandu	Receptionist	Private
KESHAV SAUD	Gwashhi Sec.	Teacher	Public
KIRAN BHATT	Satyawati Academy	Teacher	Private
KHADAK BAHADUR BIST		Teacher	Government
KRISHAN BAHADUR DHAMI	Chdani Adharbhut Vidhyalaya	Teacher	Public
KRISHNA BAHADUR BK	Samata School	Teacher	Public
KULBIR CHAUDHARY	Kailali Vision Boarding School	Teacher	Private
MAHESH RAJ JOSHI	Sahakari Mantralaya	Computer Operator	Government
NABIN CHANDRA PANDEY	Baidhyanath Sec. School	Teacher	Public
NIRMALA BIST	Khaptad Boarding School	Teacher	Public
NIRMALA KUMARI THAPA	Own Business	owner	Own
PRAKASH NEPALI	Hunainath Sec. Darchula	Teacher	Government



	Armed Police Force	Police	Government
PRAKASH SINGH DHAMI			
PUSPA CHAND	Saksham Paathshala	Teacher	Private
RAJU KUMARI RAWAL	Pyara Mount School Kathmandu	Teacher	Private
SUSHIL BHANDARI	Seti Zonal Hospital	Com. Operator	Public
SWASTIKA PARIYAR	Own Business	Owner	Own
TARA BIST	Zems Academy, Punarbas	Teacher	Private
TARA SAUD	Khaptad Vidya Niketan	Teacher	Private
BHAGRATHI BHATTA	Japan	Salesman	Private
BHUPENDRA CHAND	Sudurpachim Sec.	Teacher	Public
BINDRA PANDEY	Hotel	Manager	Own
CHANDRAKALA BHATTA	Kids Zone Academy	Teacher	Private
DINESH BK	Kumalikot Sec. Dipayal	Teacher	Government
JANAK BAHADUR DHAMI	Majkhori Sec. Shool	Teacher	Public
JAY RAJ JOSHI	Shiva Ma. Vi	Teacher	Public
KESHAB RAJ BHATTA	Plan International Nepal	Education Leeds	INGO
NANITA KUMARI THAPA	Chandrodaya Ma. Vi.	Teacher	Public
RABIN KADAYAT	Holliland School	Teacher	Private
RABINDRA BHATTA	Durga Secondary	Teacher	Public
SARASWATI ROKAYA	Qatar	Abroad Employment	Private
SHIV RAJ OJHA	Kalikasthan Ma. Vi. Daha Doti	Teacher	Public
SUNDARBATI K.RANA	Bairab Sec.	Teacher	Government
TAP RAJ OJHA	Durgalaxmi Model Sec. School	Teacher	Public

